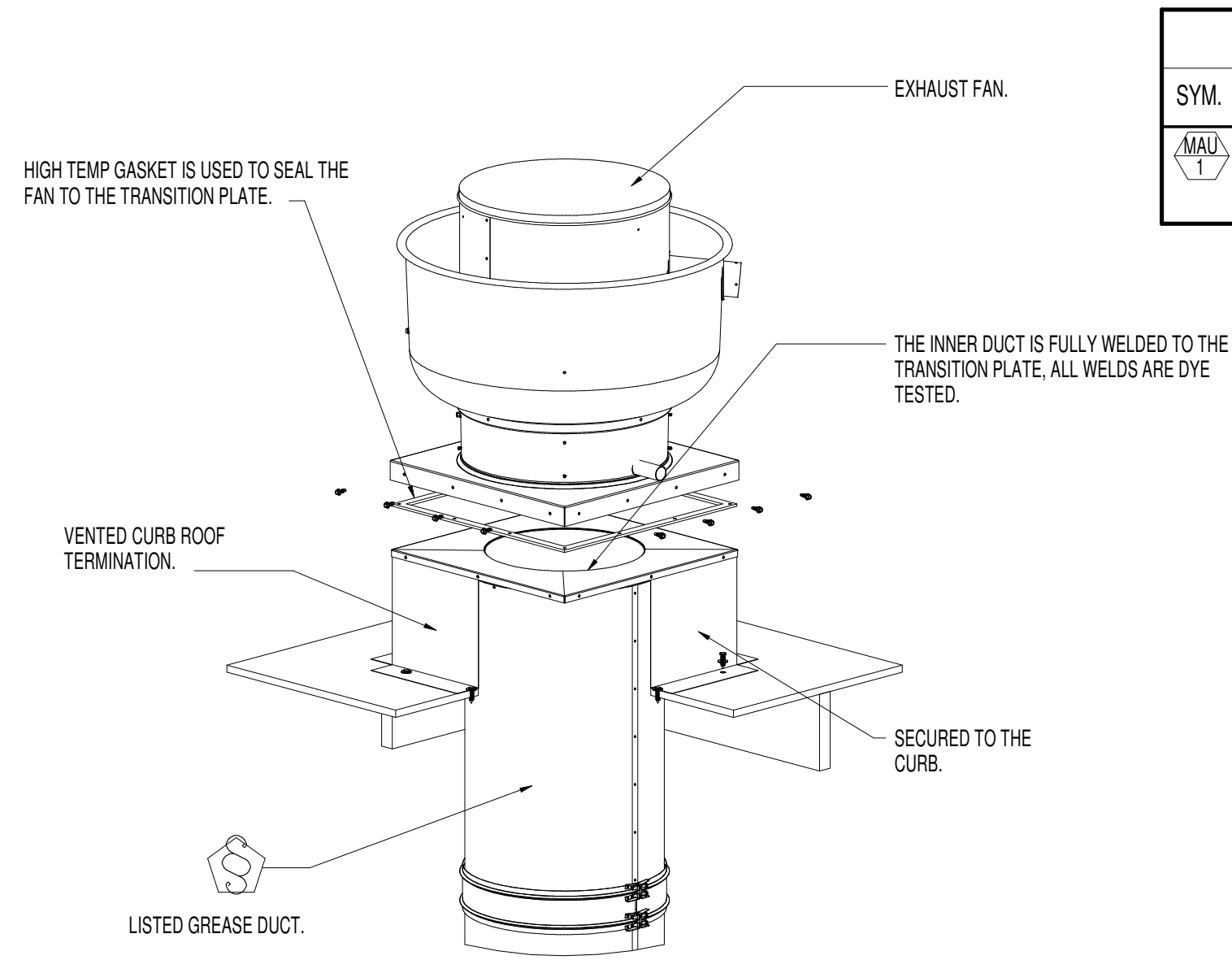
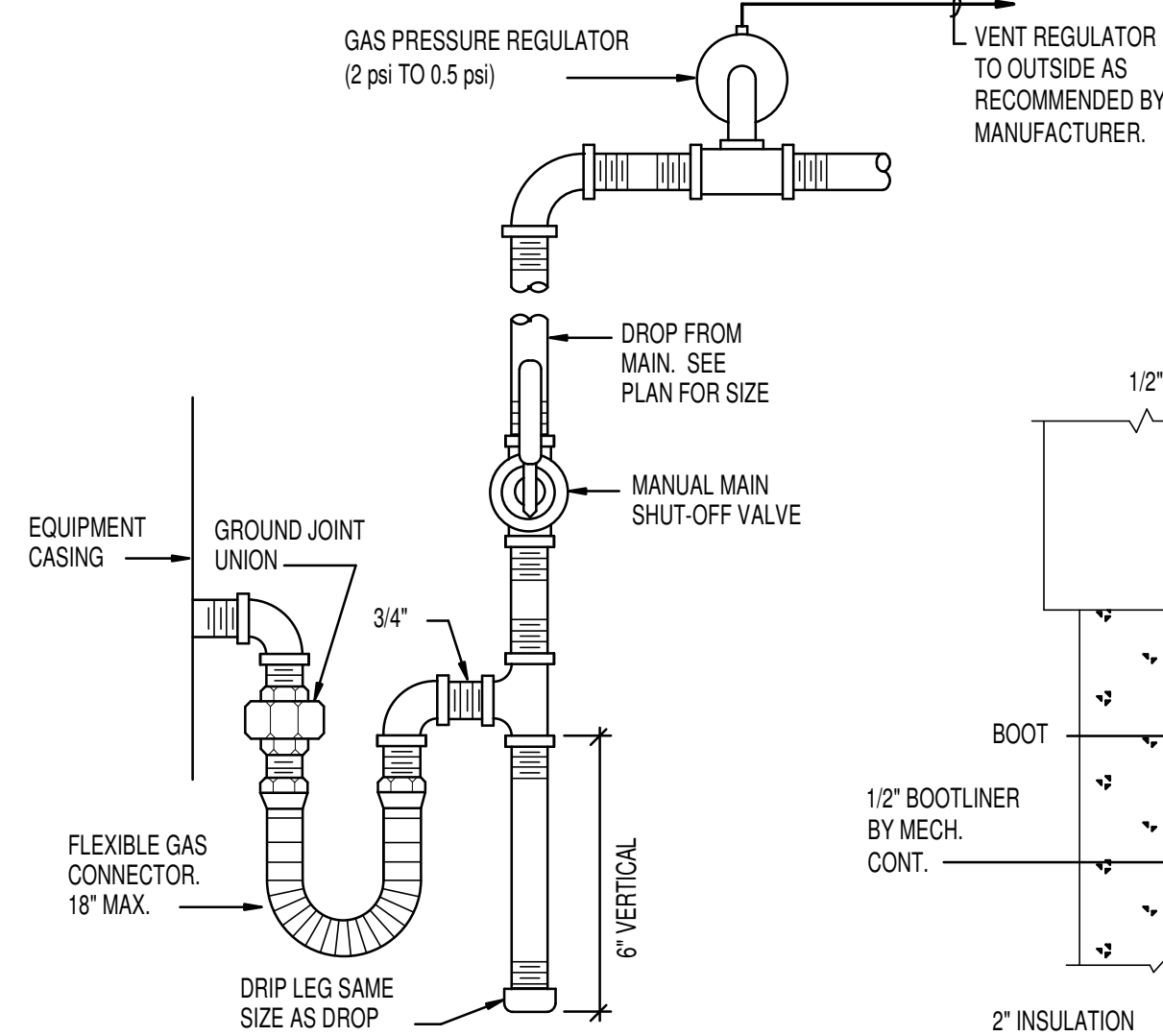


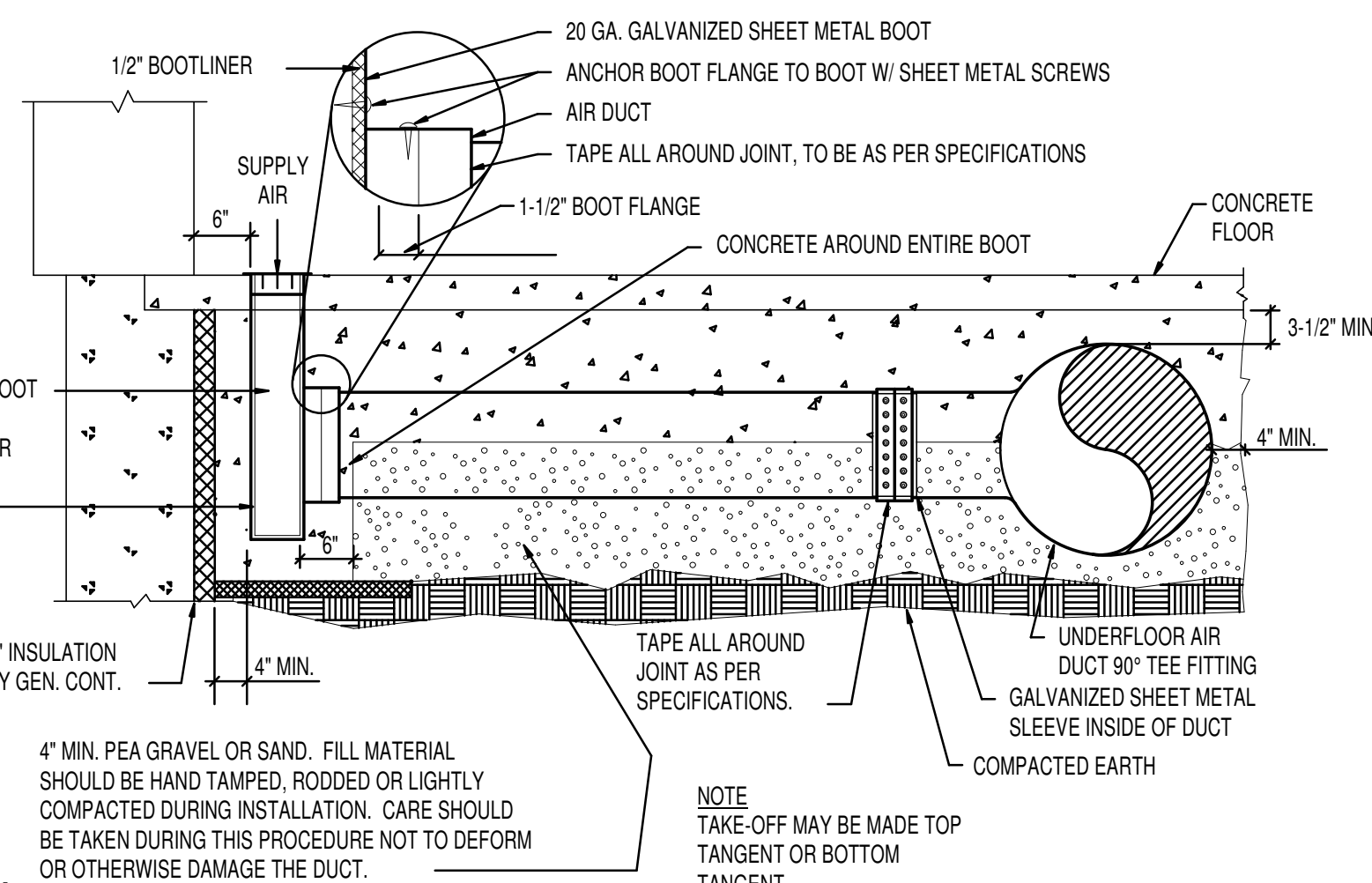
A HOOD 2 & 3 DETAIL
SCALE: NONE



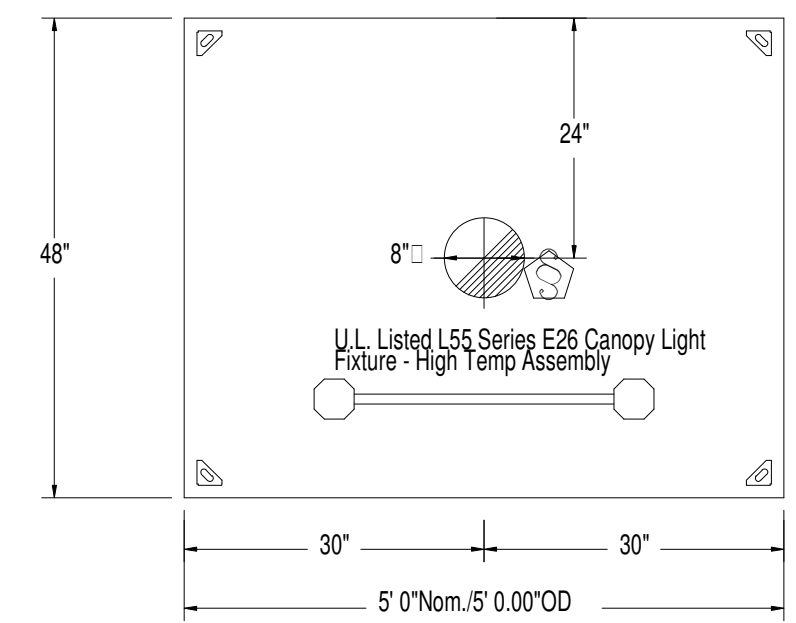
C ROOF TOP EXHAUST FAN DETAIL
SCALE: NONE



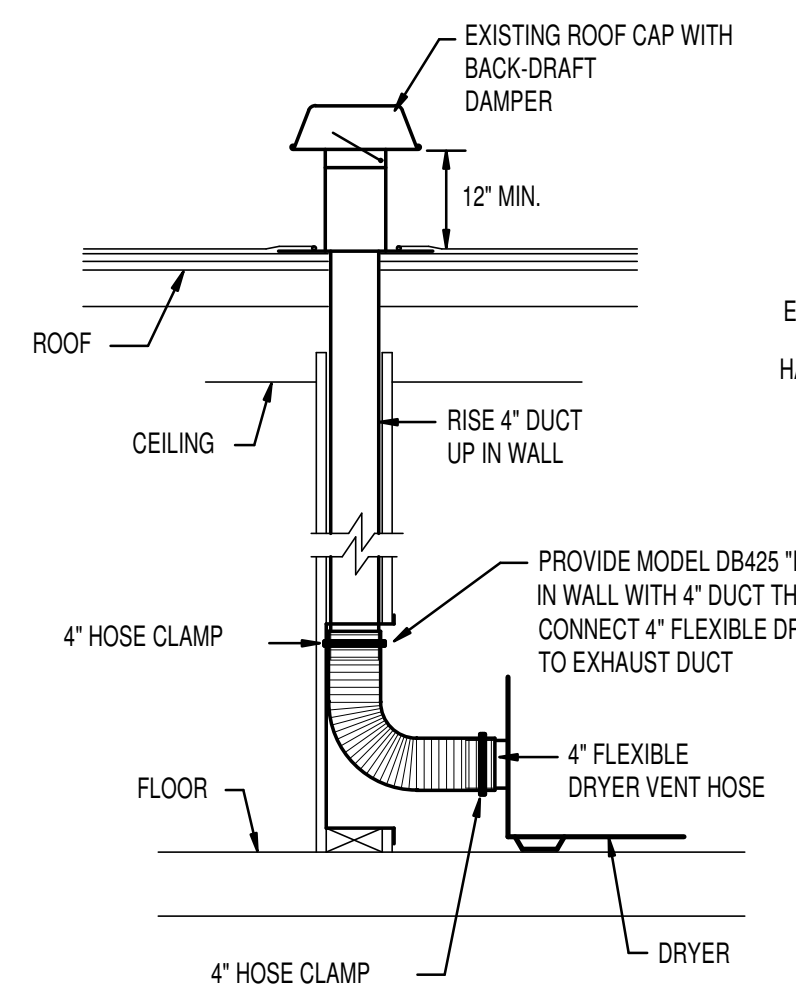
G GAS CONNECTION DETAIL
SCALE: NONE



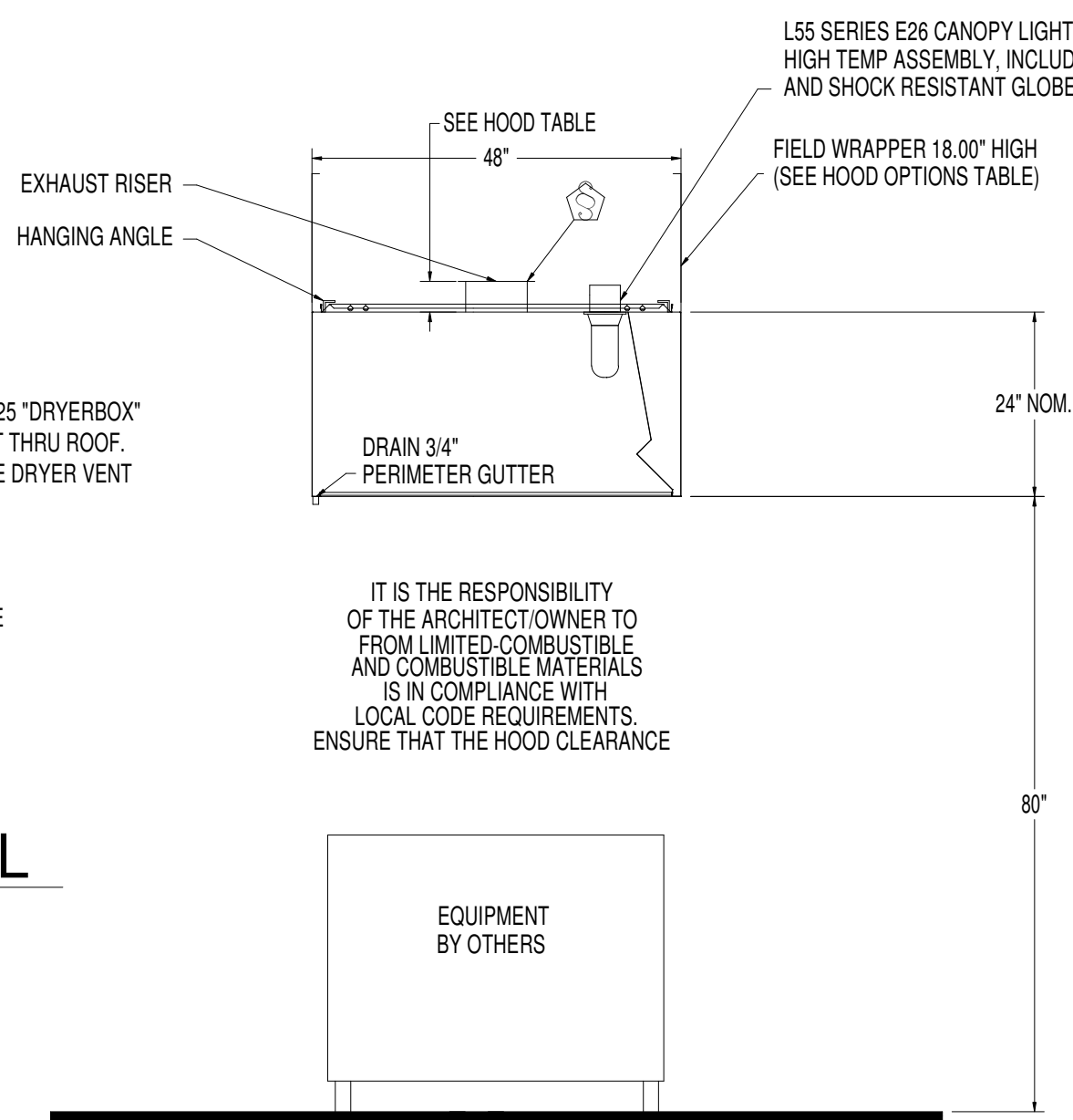
F UNDERFLOOR DUCT & BOOT DETAIL
SCALE: NONE



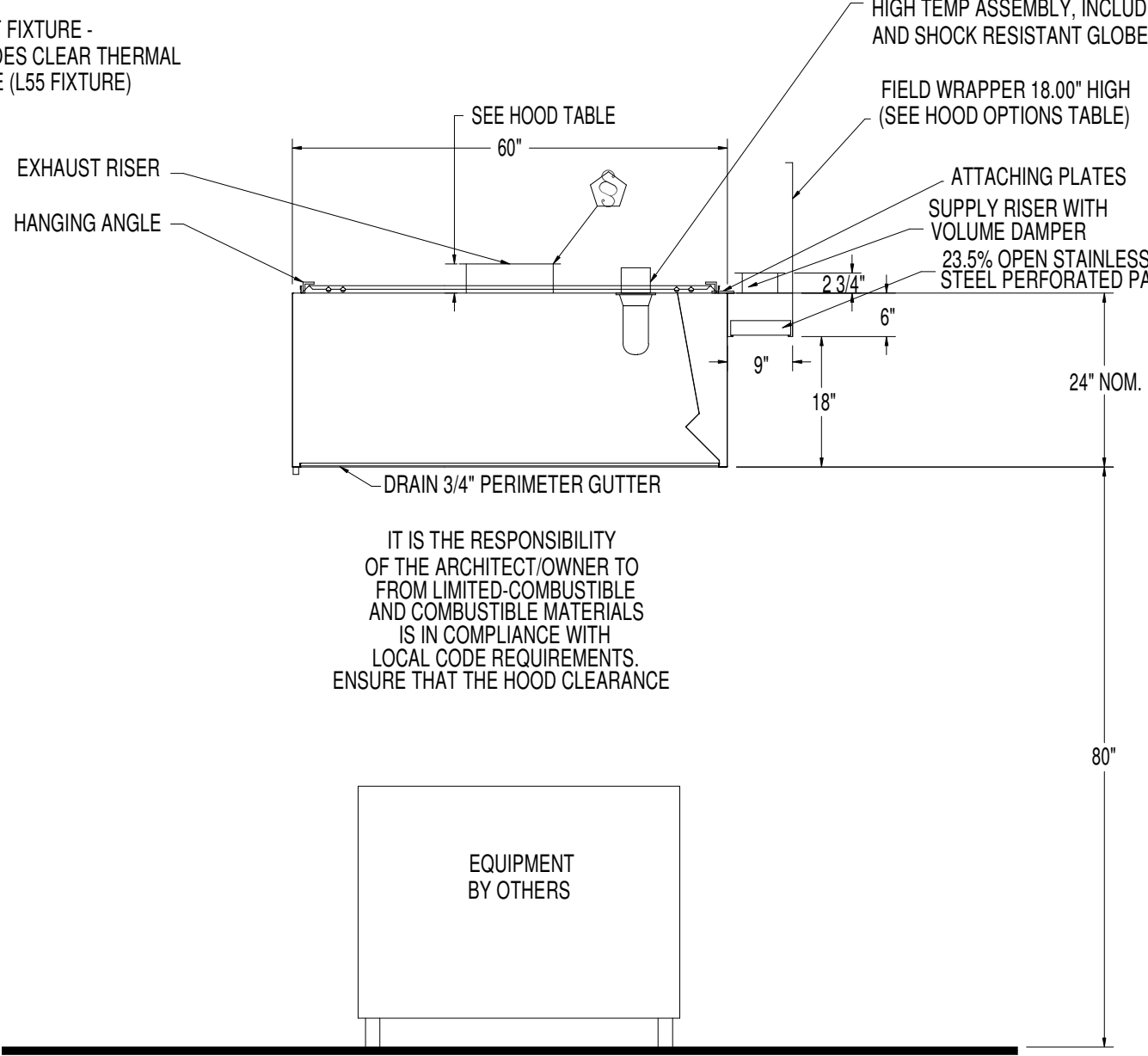
B HOOD 1 DETAIL
SCALE: NONE



H DRYER VENT DETAIL
SCALE: NONE



D HOOD 1 SECTION VIEW DETAIL
SCALE: NONE



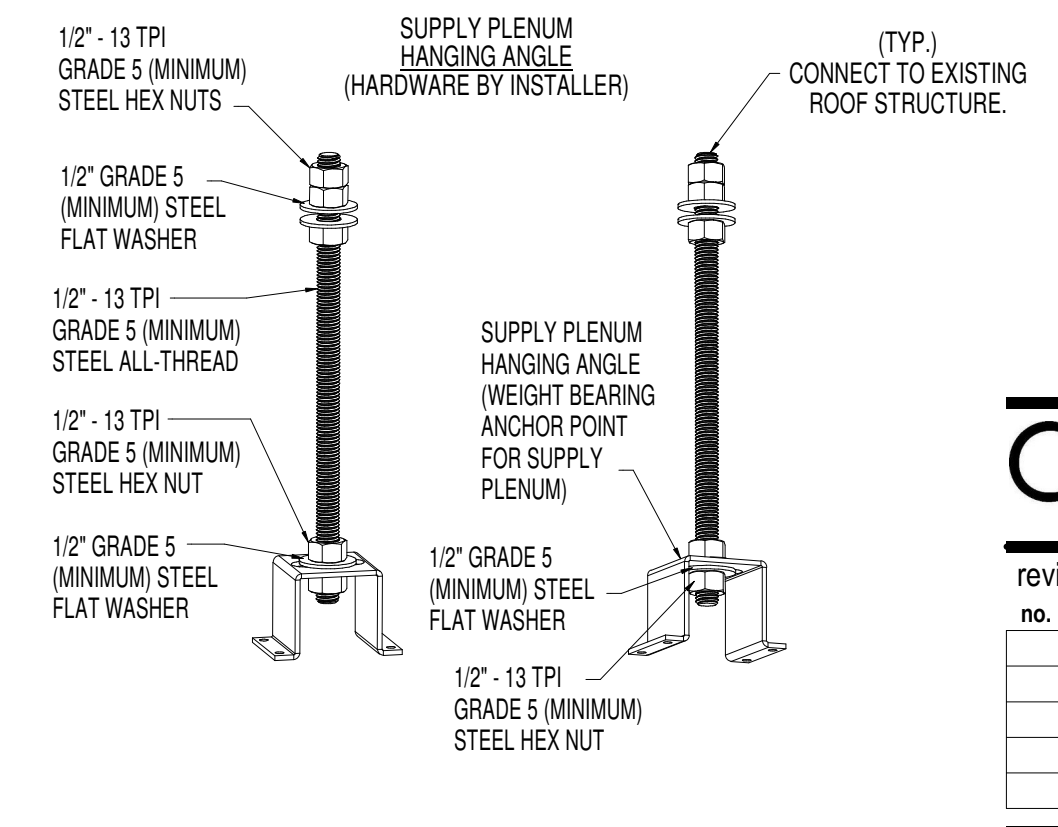
E HOOD 2 & 3 SECTION VIEW DETAIL
SCALE: NONE

MAKE UP AIR UNIT																
SYM.	TYPE	DESIGN CFM	O.A. CFM	SP. E	H.P.	CHAR.	KBTU IN	KBTU OUT	FLA	WEIGHT	RPM	FAN UNIT MODEL #	BLOWER MODEL #	HOUSING	GAS TYPE	REMARKS
MAU-1	DOWN-FLOW	2880	2880	5"	5	208/60/3	202	186	9.6	660 LB	2374	EA1-D.250-18Z	18Z-1-MOD	A1-D.250	NAT.	ECON AIR EA1-D.250-18Z WITH ROOF CURB & OPTIONAL DOWNTURN.

KITCHEN HOOD UNIT SCHEDULE									
SYM.	LENGTH	WIDTH	TYPE	CHAR.	WEIGHT	EXIT DUCT	FIRE SYM	FAN SYM	REMARKS
KH-1	5'	4'	CEILING	208/60/3	241 LB	8"	NO	EF-1	ECON AIR MODEL 4824 ES-VHB-G-ND. WITH L55 SERIES E26 LIGHTS. SEE DETAILS ON THIS SHEET FOR ADDITIONAL HOOD DETAILS.
KH-2	16'	4'	CEILING	208/60/3	642 LB	2x 12"	NO	EF-2	ECON AIR MODEL 6024 ES-VHB-G-PSP-F-ND. WITH L55 SERIES E26 LIGHTS. SEE DETAILS ON THIS SHEET FOR ADDITIONAL HOOD DETAILS.
KH-3	16'	4'	CEILING	208/60/3	642 LB	2x 12"	NO	EF-3	ECON AIR MODEL 6024 ES-VHB-G-PSP-F-ND. WITH L55 SERIES E26 LIGHTS. SEE DETAILS ON THIS SHEET FOR ADDITIONAL HOOD DETAILS.

GRILLE AND REGISTER SCHEDULE									
SYM.	SIZE	THROW	CFM	CONSTR.	FINISH	BRANCH DUCT	F.D.	O.B.	REMARKS
FR-1	6 x 24	NA	650	STEEL	ANODIZED	12" DIA.	NO	NO	PRICE LBPH-15A WITH OPTIONAL DAMPER
RG-1	12 x 6	NA	100	STEEL	WHITE	12 x 3	NO	NO	PRICE S35 WITH NARROW FRAME
RG-2	20x20	NA	1000	STEEL	WHITE	-	NO	NO	PRICE S35 IN 24x24 LAY-IN CEILING
C-1	6x6	NA	100	STEEL	WHITE	6" DIA	NO	NO	PRICE SMD

FAN UNIT SCHEDULE												
TAG	ECON AIR FAN UNIT MODEL #	CFM	ESP.	RPM	H.P.	B.H.P.	□	VOLT	FLA	DISCHARGE VELOCITY	WEIGHT (LBS.)	SONES
EF-1	EADU12H	500	0.500	1471	0.250	0.1190	1	208	2.5	355 FPM	56	8.9
EF-2	EADU85H	1600	0.500	1096	0.750	0.2230	1	208	5.2	506 FPM	92	10.6
EF-3	EADU85H	1600	0.500	1096	0.750	0.2230	1	208	5.2	506 FPM	92	10.6



ASSEMBLY INSTRUCTIONS
HANGING ANGLE MUST BE SUPPORTED WITH 1/2" - 13 TPI GRADE 5 (MINIMUM) ALL-THREAD. SANDWICH HANGING ANGLES AND CEILING ANCHOR POINTS WITH 1/2" GRADE 5 (MINIMUM) STEEL FLAT WASHERS AND 1/2" - 13 TPI GRADE 5 (MINIMUM) HEX NUTS AS SHOWN. MUST USE DOUBLED HEX NUT CONFIGURATION ABOVE CEILING ANCHORS. SINGLE HEX NUT BENEATH HANGING ANGLE IS ACCEPTABLE FOR PSP HANGING ANGLES. MAINTAIN 1/4" OF EXPOSED THREADS BENEATH BOTTOM HEX NUT. TORQUE ALL HEX NUTS TO 57 FT-LBS.

ASSEMBLY INSTRUCTIONS
HANGING ANGLE MUST BE SUPPORTED WITH 1/2" - 13 TPI GRADE 5 (MINIMUM) ALL-THREAD. SANDWICH HANGING ANGLES AND CEILING ANCHOR POINTS WITH 1/2" GRADE 5 (MINIMUM) STEEL FLAT WASHERS AND 1/2" - 13 TPI GRADE 5 (MINIMUM) HEX NUTS AS SHOWN. MUST USE DOUBLED HEX NUT CONFIGURATION BENEATH HOOD HANGING ANGLES AND ABOVE CEILING ANCHORS. MAINTAIN 1/4" OF EXPOSED THREADS BENEATH BOTTOM HEX NUT. TORQUE ALL HEX NUTS TO 57 FT-LBS.

ASSEMBLY INSTRUCTIONS
HANGING ANGLE MUST BE SUPPORTED WITH 1/2" - 13 TPI GRADE 5 (MINIMUM) ALL-THREAD. SANDWICH HANGING ANGLES AND CEILING ANCHOR POINTS WITH 1/2" GRADE 5 (MINIMUM) STEEL FLAT WASHERS AND 1/2" - 13 TPI GRADE 5 (MINIMUM) HEX NUTS AS SHOWN. MUST USE DOUBLED HEX NUT CONFIGURATION ABOVE CEILING ANCHORS. SINGLE HEX NUT BENEATH HANGING ANGLE IS ACCEPTABLE FOR FULL LENGTH HANGING ANGLES. MAINTAIN 1/4" OF EXPOSED THREADS BENEATH BOTTOM HEX NUT. TORQUE ALL HEX NUTS TO 57 FT-LBS.

Engineered Systems Associates
1355 EAST CENTER
POCATELLO, IDAHO 83201
PHONE: (208) 233-0501
FAX: (208) 233-0529
EMAIL: esa@engsystems.com
ESA JOB NUMBER: 18076

no.	description	date

project: 1806
DPW project: 19230
date: 3/27/2019

MECHANICAL SCHEDULES & DETAILS PLAN

sheet: M2.1